

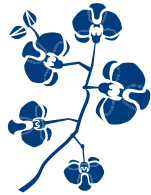


# EXTRA STRENGTH ALL-OVER BODY WAX HAIR REMOVAL KIT

EXCLUSIVE BRAZILIAN FORMULA

Perfect For:

- Body
- Arms
- Bikini Area
- Legs
- Underarms
- and More!



Finally! A hair remover that leaves no doubt... your hair will be completely removed. No more missed hairs – even pesky little hairs are removed. The natural botanical formula with Orchid and Marine Extracts relaxes hair for easy, complete removal while pampering and moisturizing skin. You get beautiful, shiny, smooth skin... without the expense and trouble of costly salons!

The Extra Strength collection is formulated to glide on exactly where you want without the gooey, drippy mess of other hair removers. Each remover has real vanilla fragrance to please the senses while you remove hair. And, as with all Sally Hansen hair removers, continued use will help reduce the appearance of hair regrowth. Choose from 5 removers that answer your individual hair removal needs.

## GET BEAUTIFULLY BARE

- Extra Strength Wax Removes Even Coarse, Hard-To-Remove Hair with the Bulb of the Root – Smooth Results Last **Up to 8 Beautiful Weeks!**
- Grips Hair, Not Skin – Whisks Away Hair Without Pulling Delicate Skin for Maximum Smoothness and Minimal Discomfort
- Natural Botanicals Help Relax and Soften Thick, Coarse Hair for Better Grip, More Complete Removal
- Orchid & Marine Extracts Nourish and Moisturize Skin
- Skin Looks Beautifully Bare, Feels Soft and Smooth

PLEASE READ THIS INSTRUCTION BOOKLET CAREFULLY BEFORE PROCEEDING WITH TREATMENT

## QUICK TIPS FOR SUCCESSFUL HAIR REMOVAL

- Read all cautions and instructions carefully.
- Clean and dry skin.
- Apply wax in the same direction as hair growth.
- Apply wax in a thin layer.
- Stroke cloth strip 2-3 times with some pressure before removing hair.
- Remove wax in the opposite direction of hair growth.
- Hold skin taut and remove strip close to skin surface.

For the best possible results, please read on.

## WHERE TO USE

Legs, arms, underarms, bikini area... anywhere unwanted hair is a problem.

## HAIR LENGTH

Hair should be at least 1/4" long so it will adhere to wax. Hair should be no longer than 1/2". To avoid tangling and discomfort, trim longer hair before treatment.

## PREPARATION

FOR BEST RESULTS, READ ALL INSTRUCTIONS AND CAUTIONS BEFORE YOU BEGIN. Be sure you keep wax away from areas not being treated.

Skin should be **clean and dry**, free of oils, lotions, cremes and perspiration. Wash areas to be treated with soap and water. Dry thoroughly. If desired, lightly dust skin with talcum powder to help wax adhere better.

## IMPORTANT BASIC WAXING STEPS

**NOTE: The suggested heating time range is a guide. Individual microwaves may vary. Heat wax for minimum time first. Repeat at shorter intervals as needed until wax is warm.**

**Wax must be spread thinly to be effective. If it's too cool, it will be difficult to spread. Be sure to heat it sufficiently. TEST WAX TEMPERATURE BEFORE USE. Testing the wax temperature helps prevent overheating and helps ensure wax temperature is safe for use. If wax is too hot, let it cool for a few minutes and test again.**

## MICROWAVE WAX

- Remove lid from jar. Make sure jar is free of any metal or paper tags.
- Microwave jar of wax for 30 seconds at a medium setting until wax is melted to a spreadable consistency.
- If wax has not melted, additional heating time is required. Repeat at 15-second intervals until wax is warm and easily spreadable. **DO NOT OVERHEAT.**

## APPLY WAX



- Determine direction of hair growth – apply wax in the same direction. (Hair often grows in several directions in the same area. If needed, work on one small area at a time for accuracy.)
- Check wax temperature before applying. Test wax on the inside of your wrist - wax should be warm, not hot.
- Use wooden spatula to spread a thin layer of wax **IN THE DIRECTION** of hair growth over one small area at a time.

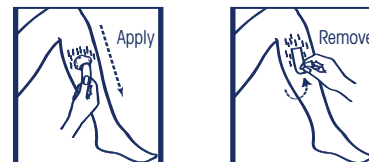
## APPLY/REMOVE STRIP

- Apply strip **IN THE DIRECTION** of hair growth.
- Stroke strip 2-3 times in the direction of hair growth to help wax grip hair.
- Leave at least 1/2" cloth strip free so it can be easily grasped.
- Immediately remove strip: Hold skin taut with one hand and use the other hand to pull off strip **VERY QUICKLY IN THE OPPOSITE DIRECTION** of hair growth. Keep hand as close to skin as possible. If strip is peeled off too slowly, wax will remain on skin and hair will not be removed.
- Immediately apply firm pressure to area with your fingertips or palm of your hand.
- A slight reddening of the skin is normal for several hours after removing hair by the root, as is a minor stinging sensation on sensitive skin. If more severe reaction occurs, discontinue use immediately - do not proceed with full treatment.

## AFTER HAIR REMOVAL

- Gently wipe skin with Azulene Finishing Oil after hair removal is complete to help remove excess wax residue and to moisturize and soften skin.

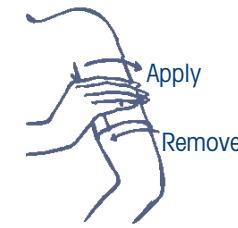
## LEGS



## Tips:

- Divide legs into 3 segments: thigh to knee, top of knee to bottom of knee, and bottom of knee to ankle. Work on one section at a time.
- NOTE: Hair may grow in many directions on back of thigh, often in a "swirling" pattern. Follow the direction of the hair's growth pattern. Remove irregular patches first.
- Remove hair completely from one section before working on the next.

## ARMS



## Tips:

- Divide arms into upper and lower sections. Then divide into inner and outer.
- Remove hair completely from one section before working on the next.

## UNDERARMS



## Tips:

- Raise arm with your elbow bent so the palm of your hand touches the back of your shoulder.
- NOTE: Underarm hair may grow in many directions. Follow the direction of the hair's growth pattern. Remove irregular patches first.

## BIKINI LINE



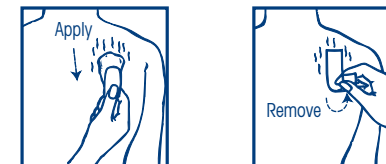
## Tips:

- Always hold skin taut. Work in small areas from the outer bikini line to the inner bikini line.
- Complete one side before going to other side. Do not wax more than a two-inch area at a time.
- Follow hair growth patterns when applying wax to bikini area.

## ESPECIALLY FOR MEN

EXTRA STRENGTH ALL-OVER BODY WAX HAIR REMOVAL KIT gives men long-lasting, effective hair removal, too! Perfect for unwanted body hair on back, shoulders, chest and ears.

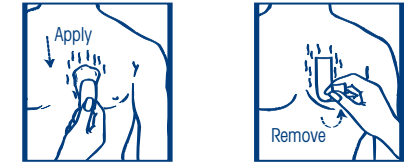
## BACK & SHOULDERS



## Tips:

- Be sure to carefully follow the direction of hair growth.
- Hold skin taut and remove hair in the opposite direction of hair growth.

## CHEST



## Tips:

- Work from the center of the chest, moving outward.
- Complete one side before going to other one.

## EAR LOBE AREA

## Tips:

- Cut a very small strip for area. Only cut strips lengthwise.

## DO'S

- DO remember to hold the skin very taut when removing the cloth strips - particularly on areas of the body where skin is less firm.
- DO keep cloth strips as close to skin as possible when pulling cloth strip off in opposite direction of hair growth.
- DO wait 1 hour after taking a shower or bath before using Extra Strength Wax.
- DO cut strips in smaller proportions if necessary - always cut lengthwise to ensure maximum performance.

## DON'TS

- DON'T USE Extra Strength Wax if you are currently using Glycolic Acid or other dermatological treatments.
- DON'T USE Extra Strength Wax in a warm room where you may perspire.
- DON'T USE on compromised skin.

## CAUTION

**DO NOT ALLOW WAX TO BOIL. DO NOT OVERHEAT. EXCEEDINGLY HOT WAX CAN CAUSE BURNS. HANDLE MELTED WAX WITH CARE. TEST WAX TEMPERATURE ON INSIDE OF WRIST BEFORE BEGINNING APPLICATION. IF WAX IS TOO HOT, ALLOW TO COOL BEFORE PROCEEDING.**

- The plastic jar is designed only for use in the microwave. DO NOT USE IN CONVENTIONAL OR TOASTER OVENS. DO NOT APPLY DIRECT HEAT OR FLAME.
- DO NOT leave wax unattended while heating.
- DO NOT use on irritated, chapped, sunburned or cut skin, over moles or warts, or after a hot bath. NEVER use on nipples, perianal, vaginal/genital areas, or on hairs inside nostrils, ears or on eyelids/eyelashes.
- Avoid irritants such as sunburning or very hot baths for 24 hours after application.
- To avoid irritation, never reapply on the same area within a 24 hour period.
- Ingrown hairs sometimes result from hair removal. To accelerate the shedding of skin cells that may be locking in hairs, rub skin briskly with a loofah sponge or washcloth when showering.
- Always check hair's growth pattern before applying wax. Failure to remove hair usually indicates that you've pressed on or pulled off in the wrong direction or removed wax too slowly.
- Remove wax while it is still soft and pliable. Overdried wax becomes brittle and is difficult to remove. Wax residue can be removed from the skin by applying Azulene Oil.
- Avoid getting wax on clothing, jewelry, carpeting and personal items

**FOR EXTERNAL USE ONLY. KEEP OUT OF REACH OF CHILDREN.**

SALLY HANSEN® DIV., DIST.

Del Laboratories, Inc., Uniondale, NY 11556 ©Del Laboratories, Inc. 2005 5037 245037000